

BRINGING SIMPLICITY & PRECISION TO A COMPLEX HEALTH ISSUE

Easy to follow tools

- Rationing tool
- Weight Management tool



Easy & time saving
the whole process
is completed in
2 minutes



**A scientifically
proven protocol**
to identify the
ideal weight in
15 seconds



**Precise & evolving
ration** including
mix feeding



**Precise & evolving
visits plan** which
automatically
adjusts ration and
target weight



VET SERVICES

For more information consult your
ROYAL CANIN® representative

Username: _____

Password: _____

vetfollowup.royalcanin.com.au


ROYAL CANIN®



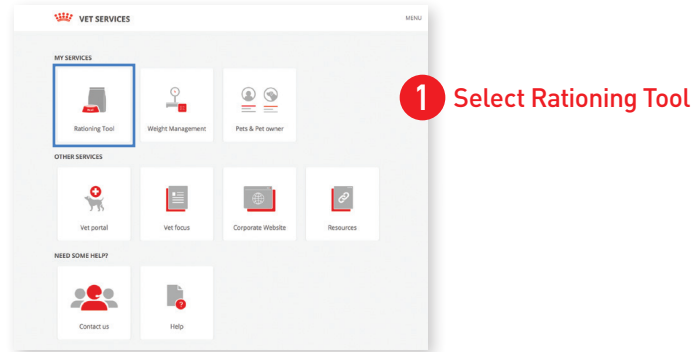
VET SERVICES

**NUTRITIONAL EXPERTISE
IN A UNIQUE DIGITAL SERVICE**

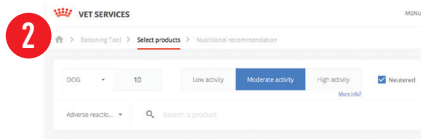


CALCULATE A PRECISE DAILY DIET RATION

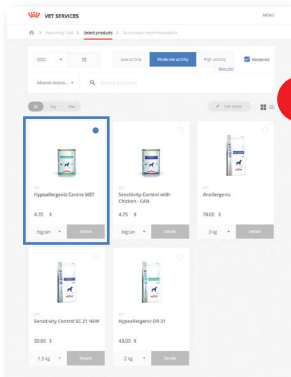
Our **Rationing Tool** allows you to easily calculate a daily diet ration for cats and dogs:



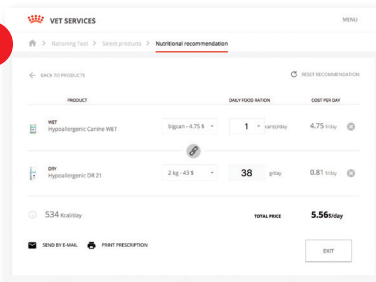
Enter the pets details and select a food category from the drop down list.



3 Select the appropriate dry and wet diet then press continue. Note: you will need to set your clinics prices for each product the first time you use the tools.



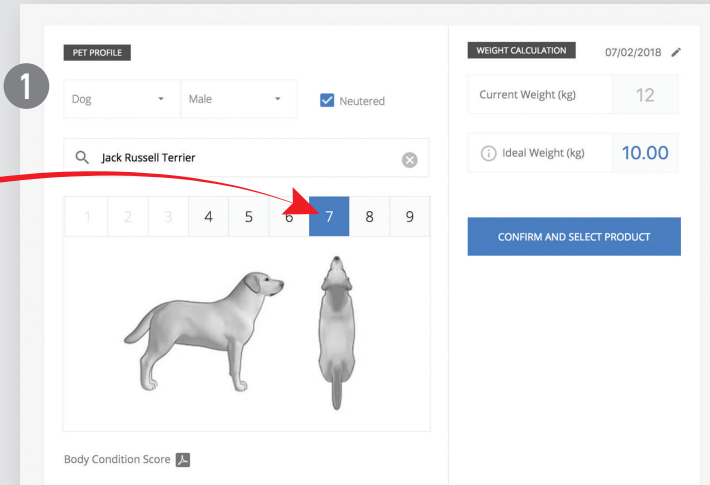
4 Review the daily ration with your client. You are able to print the prescription or email it directly to your client.



PLANNING AN INDIVIDUAL WEIGHT LOSS PROGRAM

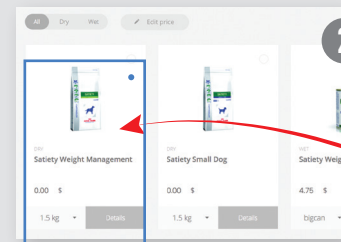
You can also prescribe an individualised Weight Loss Program in 2 minutes:

Enter the pets details including their current Body Condition Score and target weight.

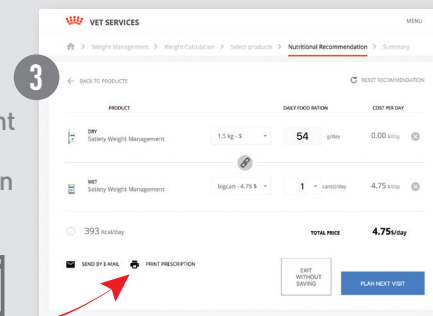


Calculate a precise diet recommendation in 2 minutes

→ Select the appropriate dry and wet diet, then press continue.



Review the daily ration, print or email the recommendation to your client.



Customise

You can adjust the target weight, feeding ration and next visit date. Adapt the diet recommendation at your convenience.



4 To keep the pet on track and readjust the target:

→ Create a visit plan with a target weight for each visit.

→ If the appointment date or the current weight has changed, the new target weight will automatically be updated.

